



charm
handcrafted
for you

chests



The history of chests is the history of the American people. From the wooden steamer trunks that crossed the wide ocean with dreams of a brighter future to great Grandma's old waterfall chest in the guest bedroom of the old farmhouse. These chests hold memories of a bygone age.

Today a lot of things are changing but the lure of this American icon is strong as a new set of adventurers sets off for the unknown.

Celebrate our past and leave a legacy of adventure with the unforgettable beauty and quality of these handcrafted chests.

Quality handcrafted by second generation woodworkers in Lancaster County, Pennsylvania.



CEDAR CHESTS



4 Basic Cedar Series
functional design



5 Franklin Series
flat top design



6 Summerfield Series
waterfall design



8 Springfield Series
seat rail design

CLASSIC



22 Yorktown Series
classic replication



26 Mission Series
mission style



23 Mayflower Series
classic panel design



24 Shaker Series
simple panel design

TRUNKS & TOY CHESTS



10 Steamer Trunk
rounded top



12 Plymouth Trunk
flat top



28 Toy Chest
with custom engraving



29 Large Toy Chest
with custom engraving

gallery of styles

ELEGANT AND MODERN



26 Hairpin Series
clean and modern



17 Manchester Series
seat rail with faux front



16 Cambridge Series
seat rail design



27 Wheatland Series
original Lancaster design

COLONIAL



18 Charleston Series
flat top design



20 Carriage House Series
with working drawers



21 Savannah Series
deep storage



14 Harmony Series
standard waterfall

basic cedar

series



#40-11 Large Basic Cedar Chest
42"long x 18½" wide x 19½" high

The Basic Cedar series is beautifully handcrafted with true historical and aesthetic value. Created with wonderful care and attention to detail in our Lancaster County woodworking shop.



#20-11 Small Basic Cedar Chest
30"long x 15 ½" wide x 16 ½" high



#30-11 Medium Basic Cedar Chest
36"long x 17 ½" wide x 18 ½" high

franklin

series

Square trim and top corners give the Franklin series a sturdy look that speaks of decades of functionality. The Franklin comes standard with a lock-set and is crafted with heirloom quality details and solid cedar wood.

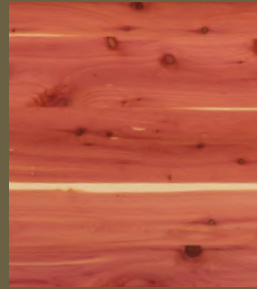


#55-11 Large Franklin Cedar Chest
46"long x 20" wide x 21 ½" high



#44-11 Medium Franklin Cedar Chest
42"long x 18 ½" wide x 19" high

standard cedar chest features



cedar wood

Our cedar chests are made from western American cedar. A wood that has been prized for centuries for its sweet fragrance.

The inside of the chest is uncoated and the outside is coated with a durable sealer.

hinges

All cedar chests have a top that opens to reveal the spacious storage area.

We use quality hinges and a hinge support that allows the lid to open to 90 degrees for easy access.



see optional features on page 9



#33-11 Small Franklin Cedar Chest
36"long x 17 ½" wide x 17 ½" high

summerfield

series



#77-11 Large Summerfield Cedar Chest
46"long x 20" wide x 21 ½" high

The elegant Summerfield series is considered a waterfall chest because of the lid that curves downward like water going over the rim of a waterfall. The perfect balance between functionality and aesthetic beauty makes this chest a long time favorite. Comes standard with a lock-set and heirloom quality workmanship.

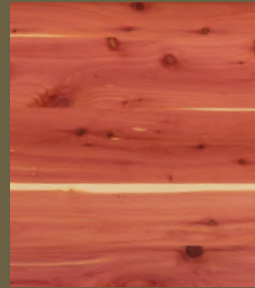


#97-11 Jumbo Summerfield Cedar Chest
46"long x 24 ½" wide x 25 ½" high



#37-11 Small Summerfield Cedar Chest
36"long x 17 ½" wide x 18" high

standard cedar chest features



cedar wood

Our cedar chests are made from western American cedar. A wood that has been prized for centuries for its sweet fragrance.

The inside of the chest is uncoated and the outside is coated with a durable sealer.

hinges

All cedar chests have a top that opens to reveal the spacious storage area.

We use quality hinges and a hinge support that allows the lid to open to 90 degrees for easy access.



see optional features on page 9



#72-11 Medium Summerfield Cedar Chest
42"long x 18 ½" wide x 19 ½" high

springfield

series

The Springfield serves double purpose as a comfortable seat that's just right for tying shoes. Carefully upholstered with premium fabrics and touting the same careful craftsmanship as our other chests. Top lifts to expose storage space and features a lock-set



#4407-11 Medium Springfield Cedar Chest

42"long x 18 ½" wide x 22" high

Features #72 Vault Truffle fabric.

fabrics



#62 Ferrara Sunset



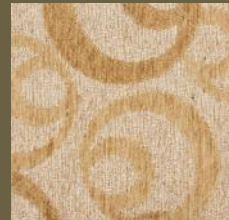
#80 Pearl



#78 Granite



#66 Molly Onyx



#70 Emboss Linen



#74 Molly Vintage



#82 Aegean



#84 Champagne



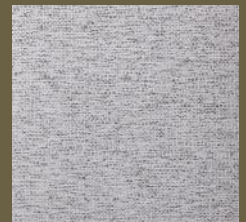
#86 Kiwi



#72 Vault Truffle



#64 Flatline Mocha



#76 Domino



#35 Green



#48 Spa



#5 Jewel Green

Can't find what you're looking for?
Purchase a fabric elsewhere and have it
sent to us as a custom fabric option.



#5507-11 Large Springfield Cedar Chest
46"long x 20" wide x 24 ½" high
Features #70 Emboss Linen fabric.

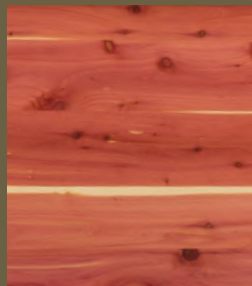
manchester series



#56-11 Manchester Cedar Chest
46"long x 20" wide x 24 ½" high
With fake doors and drawers. Featuring #78 Granite fabric.

The Manchester Chest features fake door and drawer fronts, upholstered seat cushion, and premium handcrafted cedar wood. Top lifts to expose storage space. Lock-set included.

standard cedar chest features



cedar wood

Our cedar chests are made from western American cedar. A wood that has been prized for centuries for its sweet fragrance.

The inside of the chest is uncoated and the outside is coated with a durable sealer.

hinges

All cedar chests have a top that opens to reveal the spacious storage area.

We use quality hinges and a hinge support that allows the lid to open to 90 degrees for easy access.



optional features



casters

Make it portable by adding our smooth rolling casters. Casters will raise the chest height by a ¼ inch. Not available on all models.

sliding tray

The sliding tray nestles right below the lid. The removable tray easily slides out of the way when you want to reach the main storage area of the chest.



dovetails

Dovetails have been used for a long time to create a beautiful and extremely durable corner joint. The joint is used on the four vertical corners of the chest.

engraved front

Personalize your chest with a name or use one of our standard designs to add character and sentimental value.

See page 31 for more details.



steamer trunk

series



#100-22 Steamer Trunk

36" long x 20" wide x 18" high

Shown with tavern stain on red oak wood with bronze hardware.

Take a mind trip to the country summer home, voyages abroad, and bumpy stage coach rides into a younger America's interior. This detailed replication of an old traveler's trunk is sure to lend a sense of value and the taste of adventure to your home. Handcrafted with genuine care and attention to detail. Available in a standard or tall size. Available in maple, cherry, red oak, hickory, or rustic hickory wood.



#124-22 Tall Steamer Trunk
36"long x 20" wide x 24" high

Shown with dark knight stain on red oak wood and bronze hardware.



#100-22 Steamer Trunk
36"long x 20" wide x 18" high

Shown with harvest stain on red oak wood with antique brass hardware.



#100-88 Steamer Trunk
36"long x 20" wide x 18" high

Shown with a natural finish on hickory wood with bronze hardware.

standard trunk features



wood

Our trunks are made from solid American hardwoods including:
Maple
Red Oak
Hickory
Rustic Hickory

color & finishes

A wide variety of stain and paint colors are available as well as distressed finish options. See page 32 for color options.



leather handles

Genuine leather handles give our trunks the finished, authentic touch and serve for excellent function.

hardware

trunk hardware is available in
#1 Polished Nickel
#2 Polished Brass
#3 Antique Brass
#4 Bronze



interior

All trunks have an interior tray made of solid aromatic cedar. The cross-beams inside of the trunk lid add strength and an interesting structural detail.

plymouth trunk

series



#200-22 Plymouth Trunk

36" long x 20" wide x 18" high

Shown with antique slate stain on red oak wood with old world distressing and bronze hardware.

Feel the wind of adventure and the salt spray that covers the deck of the old wooden ship. The Plymouth trunk series weaves together the blood, tears, and triumphs of the early colonists as they explored and settled the New World. Handcrafted with wonderful care and attention to detail. Available in a standard or tall size. Available in maple, cherry, red oak, hickory, or rustic hickory wood.



#200-44 Plymouth Trunk
36"long x 20" wide x 18" high

Shown with a legacy black finish on maple wood with antique brass hardware.



#224-44 Tall Plymouth Trunk
36"long x 20" wide x 24" high

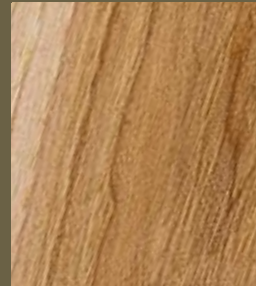
Shown with old world white parchment paint and bronze hardware.



#224-88 Tall Plymouth Trunk
36"long x 20" wide x 24" high

Shown with husk stain on rustic hickory wood and bronze hardware.

standard trunk features



wood

Our trunks are made from solid American hardwoods including:
Maple
Red Oak
Hickory
Rustic Hickory

color & finishes

A wide variety of stain and paint colors are available as well as distressed finish options. See page 32 for color options.



leather handles

Genuine leather handles give our trunks the finished, authentic touch and serve for excellent function.

hardware

Hardware is available in #1
Polished Nickel
#2 Polished Brass
#3 Antique Brass
#4 Bronze



interior

All trunks have an interior tray made of solid aromatic cedar. The cross-beams inside of the trunk lid add strength and an interesting structural detail.

harmony

series



#77-33 Large Harmony Chest

46"long x 20" wide x 21 ½" high

Shown with acres stain on cherry wood.

The elegant Harmony series is considered a waterfall chest because of the lid that curves downward like water going over the rim of a waterfall. The solid hardwood chest design is a favorite due to its gracefulness and functionality. Handcrafted by our second generation woodworkers this chest comes with a sturdy lock-set and spring loaded lid supports. Available in maple, cherry, or red oak wood.



#37-33 Small Harmony Chest

36"long x 17 1/2" wide x 18" high

Shown with bing cherry stain on cherry wood.



#72-33 Medium Harmony Chest

42"long x 18 1/2" wide x 19 1/2" high

Shown with acres stain on cherry wood and optional oval rose design (see page 31).



#97 -22 Jumbo Harmony Chest

46"long x 24 1/2" wide x 25 1/2" high

Shown with harvest stain on oak wood.

standard chest features



wood

Our chests are made from solid American hardwoods including:

Maple
Cherry
Red Oak

color & finishes

A wide variety of stain and paint colors are available as well as distressed finish options. See page 1002 for color options.



interior

All chests have a solid aromatic cedar bottom. This provides moth protection for your precious wool, fur, and linens.

hinges

All hardwood chests have a top that opens to reveal the spacious storage area. We use quality spring loaded lid supports for easier lifting.



see add-on features on page 9

cambridge

series



#4407-33 Medium Cambridge Chest
42"long x 18½" wide x 22" high

Shown with boston stain on cherry wood.
Features #76 Domino fabric and optional Bless
Our Home Engraving (see page #31).

The Cambridge is an excellent addition to the bedroom. The upholstered top makes it a convenient spot to tie shoes. Handcrafted in our Lancaster County wood shop this chest comes with a sturdy lock-set and spring loaded lid supports. Available in cherry, maple, or red oak wood.



#5507-33 Large Cambridge Chest
46"long x 20" wide x 24 ½" high

Shown with acres stain on cherry wood.
Features #76 Domino fabric.

manchester

series



Sophisticated and detailed, the Manchester series features a premium upholstered top. Hand-crafted by our second generation woodworkers this chest comes with a sturdy lock-set and spring loaded lid supports. Available in cherry or red oak wood.

#56-33 Large Manchester Chest

46"long x 20" wide x 24 1/2" high

Shown with acres stain on cherry wood. With fake doors and drawers. Featuring #76 Domino fabric and black hardware.

fabrics



#62 Ferrara Sunset



#80 Pearl



#78 Granite



#66 Molly Onyx



#70 Emboss Linen



#74 Molly Vintage



#82 Aegean



#84 Champagne



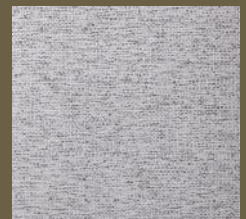
#86 Kiwi



#72 Vault Truffle



#64 Flatline Mocha



#76 Domino



#35 Green



#48 Spa



#5 Jewel Green

Can't find what you're looking for?
Purchase a fabric elsewhere and have it
sent to us as a custom fabric option.

charleston

series



#55-33 Large Charleston Chest
46"long x 20" wide x 21.5" high

Shown with boston stain on cherry wood and optional dovetail joints.

If we have a favorite it would be the Charleston. Basic and functional this chest has the perfect balance of character and simplicity. Handcrafted by our second generation woodworkers this chest comes with a sturdy lock-set and spring loaded lid supports. Available in cherry, maple, or red oak wood.



#55-22 Large Charleston Chest

46"long x 20" wide x 21.5" high

Shown with tavern stain on oak wood and optional casters and dovetail joints.



#44-33 Medium Charleston Chest

42"long x 18½" wide x 19" high

Shown with rich tobacco stain on cherry wood.



#44-22 Medium Charleston Chest

42"long x 18½" wide x 19" high

Shown with smoke stain on oak wood.

standard chest features



wood

Our chests are made from solid American hardwoods including:

Maple
Cherry
Red Oak

color & finishes

A wide variety of stain and paint colors are available as well as distressed finish options. See page 1002 for color options.



interior

All chests have a solid aromatic cedar bottom. This provides moth protection for your precious wool, fur, and linens.

hinges

All hardwood chests have a top that opens to reveal the spacious storage area. We use quality spring loaded lid supports for easier lifting.



see add-on features on page 9

carriage house

series



#702-33 Carriage House Chest (Shaker Base)

36 1/2" long x 17 3/4" wide x 23 1/2" high

Shown with autumn wheat stain on cherry wood.

This tall chest features working drawers making it a favorite living room chest. Handcrafted by our second generation woodworkers this chest comes with a sturdy lock-set and spring loaded lid supports. Choose between the Tulip or Shaker bases. Available in cherry, maple, red oak, quarter-sawn white oak, or tiger maple wood.



#701-44 Carriage House Chest (Tulip Feet)

36 1/2" long x 17 3/4" wide x 23 1/2" high

Shown with glazed pearl paint on maple wood and optional Jeremiah 29:11 engraving (see page #31).

savannah

series



#601-44 Savanna Chest (Tulip Feet)

36 1/2" long x 17 3/4" wide x 23 1/2" high

Shown with pearl white paint on maple wood and optional Psalm 62:5 engraving (see page#31).



#602-33 Savanna Chest (Shaker Base)

36 1/2" long x 17 3/4" wide x 23 1/2" high

Shown with salem cherry stain on cherry wood and optional dovetail joints.

Deeper storage and a smaller footprint sets the Savannah series apart. Choose between the Tulip or Shaker bases. Handcrafted in our Lancaster County wood shop this chest comes with a sturdy lock-set and spring loaded lid supports. Available in cherry, maple, red oak, quarter-sawn white oak, or tiger maple wood.

yorktown

series



#5500-33 Large Yorktown Chest

46 ½" long x 20 ½" wide x 21" high

Shown with harvest stain on cherry wood and optional dovetail joints.

The stylish legs of the Yorktown lend a unique but simple grace. Handcrafted by our second generation woodworkers this chest comes with a sturdy lock-set and spring loaded lid supports. Available in red oak, maple, or cherry wood.



#4400-22 Medium Yorktown Chest

42 ½" long x 19" wide x 19" high

Shown with S-2 stain on oak wood.

mayflower

series



#423-33 Medium Mayflower Chest

43"long x 18 1/2" wide x 21 1/2" high

Shown with bing cherry stain on cherry wood.



#523-22 Large Mayflower Chest

46.5"long x 20 1/2" wide x 22 1/2" high

Shown with provincial stain on oak wood.

The sophisticated Mayflower series features beautiful raised panels and curved legs. Handcrafted in our Lancaster County wood shop this chest comes with a sturdy lock-set and spring loaded lid supports. Available in cherry or red oak wood.

shaker

series



#3316-44 Two Panel Shaker Chest

33"long x 16 ½" wide x 18" high

Shown with driftwood stain on maple wood.

The shaker style was introduced by a religious group of the same name in the mid 1800's. Still popular today this chest comes with spring loaded lid supports. Available in red oak, cherry, or maple wood.



#3316-44 Two Panel Shaker Chest

33"long x 16 ½" wide x 18" high

Shown with black rub-trough painted base and acres stained top on maple wood.

shaker

series



#4219-44 Three Panel Shaker Chest

42 ½"long x 19 ¼" wide x 19" high

Shown with asbury stain on maple wood



#3316-44 Two Panel Shaker Chest

33"long x 16 ½" wide x 18" high

Shown with antique slate stain on maple wood.



#3316-22 Two Panel Shaker Chest

33"long x 16 ½" wide x 18" high

Shown with harvest stain on oak wood.

mission

series

A reproduction style based on designer Gustav Stickley's Arts and Crafts style. The design traces it's roots to the American southwest where the Spanish priests built their furniture solid and functional out of necessity.

We follow that tradition in our Lancaster County wood shop where we handcraft these solid chests. Available in red oak and quarter-sawn white oak.



#3718-22 Mission Chest

42 ½" long x 19 ¼" wide x 19" high

Shown with harvest stain on oak wood



#3718-55 Mission Chest

42 ½" long x 19 ¼" wide x 19" high

Shown with michaels stain on quarter-sawn white oak wood.

hairpin

series

Modern and basic the hairpin series comes with a sturdy lock-set and spring loaded lid supports. Available in red oak, cherry, or maple wood.



Hairpin legs are available in two or three rod configurations and either black or chrome colors.



#58-44 Large Hairpin Chest

45 ½" long x 20 ½" wide x 19 ½" high

Shown with tundra stain on maple wood and black 2-rod legs.

also available as

#48 Medium Hairpin Chest

41 ½" long x 18 ¾" wide x 18 ½" high

wheatland

series



#51-33 Wheatland Chest

46"long x 20" wide x 20 ½" high

Shown with seely stain on cherry wood.



#41-33 Medium Wheatland Chest

42"long x 18 ½" wide x 19 ½" high

Shown with seely stain on cherry wood

A nod to President James Buchanan's Lancaster home this original Lancaster County chest was designed by our second generation craftsmen.

The calming curves lend some elegance balancing the sturdy corners. The Wheatland comes with a sturdy lock-set and spring loaded lid supports. Available in red oak, cherry, or maple wood.

small toy chests



#411-44 Small Toy Chest

36 ½" long x 18" wide x 18" high

Shown with seely stain on maple wood and optional toys engraving (see page #31).

Built solid for hours of fun this solid chest features a cutout that makes it easy for little hands to lift the lid. Comes with spring loaded lid supports. Available in red oak and maple wood and pairs well with our special collection of colorful paint options. Engraved front is optional and can be personalized.



#411-22 Small Toy Chest

36 ½" long x 18" wide x 18" high

Shown with coffee stain on oak wood and optional toys engraving (see page #31).

large toy chests



#424-22 Large Toy Chest
42 ½" long x 19" wide x 19" high

Shown with provincial stain on oak wood

A larger chest for more fun. Features spring loaded lift supports for easy lifting and is available in red oak or maple woods. Engraved front is optional.



#424-22 Large Toy Chest
42 ½" long x 19" wide x 19" high

Shown with harvest stain on oak wood and optional toys engraving (see page #31).

paint options



#411-44 Small Toy Chest
36 ½" long x 18" wide x 18" high

Shown with glacier blue paint on maple wood and optional toys engraving (see page #31).



Black



Sunburst



Cran-Apple Red



Coffee Bean



Celery



Glacier Blue



Metropolitan Gray

features

hardwood chests

see page 9 for cedar chest features

standard chest features



interior

All chests have a solid aromatic cedar bottom. This provides moth protection for your precious wool, fur, and linens.



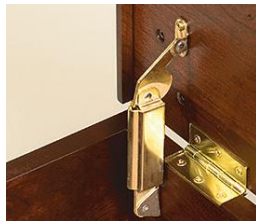
wood options

We build chests in cedar, maple, cherry, red oak, quarter-sawn white oak, hickory, rustic hickory, and tiger maple woods. Check the chest key or the description to see availability in each series.

hinges

All hardwood chests have a top that opens to reveal the spacious storage area.

We use quality spring loaded lid supports for easier lifting.



color & finishes

A wide variety of stain and paint colors are available as well as distressed finish options. See page 1002 for color options.



optional chest features



casters

Make it portable by adding our smooth rolling casters. Casters will raise the chest height by a 1/4 inch.

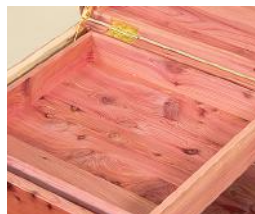


dovetails

Dovetails have been used for a long time to create a beautiful and extremely durable corner joint. The joint is used on the four vertical corners of the chest.

cedar sliding tray

The cedar sliding tray nestles right below the lid. The removable tray easily slides out of the way when you want to reach the main storage area of the chest.



cedar lined

Keep your woolen, fur, and linen treasures surrounded with cedar as a natural deterrent against damaging moths.



custom engraving



#D1 Bless Our Home - Grape Design



#D2 Oval Roses



#D3 Love Never Fails



#D4 Wheatland



#D5 Oval Grapes



#D6 Bless Our Home



#D7 Dutch Bird



#D8 Laugh Often



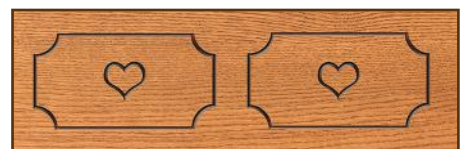
#D9 Personalized w/ Hearts & Roses



#D11 Cascade



#D12 Folklore



#D13 Country Hearts



Psalm 46:10



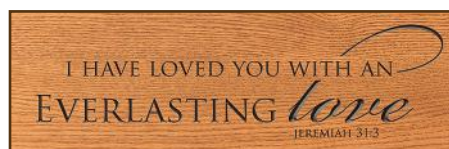
Jeremiah 29:11



Psalm 62:5



Psalm 121:8

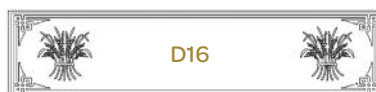
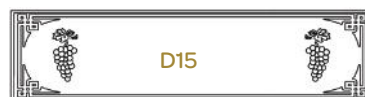


Jeremiah 31:3

Choose from one of these 17 designs or create a custom engraving to add to the front of your chest.

create a
family heirloom

1. Choose your design
2. Specify your wording (up to three lines)
3. Choose your font style.



Times New Roman

Great Vibes

Monotype Corsiva

Dancing Script



personalize it

#D-14 1 3/4" x 4" plate with brass finish. Engraved with the message of your choice. Mounts inside of lid unless otherwise specified. Up to 5 Lines with a maximum of 22 characters per line.

stains

and paints

maple stains



ocs 104 seely ocs 116 harvest ocs 225 mission maple ocs 113 michaels ocs 226 coffee ocs 227 rich cherry ocs 228 rich tobacco dark knight antique slate

cherry stains



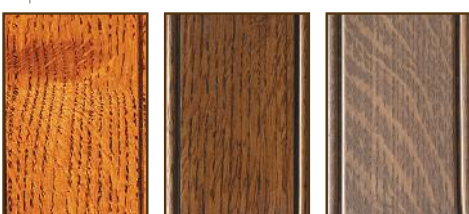
ocs 116 harvest ocs 106 acres cherry ocs 229 bing cherry ocs 104 seely nutmeg tavern ocs 228 rich tobacco dark knight smoke

red oak stains



ocs 101 s2 honey ocs 104 seely ocs 112 provincial ocs 116 harvest tavern ocs 226 coffee ocs 228 rich tobacco driftwood dark knight

quarter sawn white oak



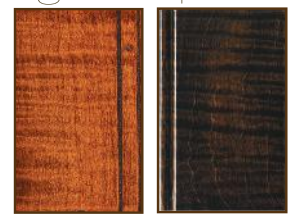
ocs 113 michaels asbury driftwood

hickory stains



natural natural rustic glazed rustic

tiger maple



ocs 113 michaels asbury

paint colors



pearl white antique white *pearl white w/ van dyke glaze chelsea gray *black rub-through

designer paints



legacy black old world distressing

warranty

and caring for your chest

caring for your chest

Our chests are coated with something called conversion varnish. This coating has excellent resistance to foods, beverages and common household chemicals. However to maintain the beautiful appearance of your furniture, a few care guidelines must be followed.

- Excessive waxing can cause moisture from a beverage can or glass to leave a milky white ring on the surface.
- Do not use cleaners containing bleach.
- Avoid cleaners with abrasives, they may scratch the finish.
- Do not allow cleaners containing ammonia to come in contact

cleaning guidelines

Generally a soft damp cloth followed by a dry cloth will be all you need to clean the finish. If a cleaner is required, use only a very mild soap and wipe dry. A high quality furniture polish may be used occasionally. Apply polish with a soft cloth following manufacturer's instructions.

Follow these steps and you will be assured that your finished piece will continue to look good for many years to come.

Cleaning: Fingerprints, cooking residues, tobacco smoke, etc. will accumulate on any finished surface. They will not damage the finish, but should be removed occasionally to restore the finish

with your furniture's finish. Ammonia may turn oak black and painted pieces yellow.

- Dyes and inks may discolor the finish. The ink and dyes from newsprint and plastic bags may penetrate into the finish when moist.
- Conversion varnish offers a very hard mar resistant surface, but like any finish, it may still be scratched or damaged if not cared for properly.

It should be noted that your new conversion varnish finish does not achieve its maximum performance properties for at least 30 days from the time it was finished. This is based on maintaining a temperature of at least 70 degrees.

to its original state. Wipe the finish with a damp cloth using a non-wax polish or mild soap.

Dust Removal: Dust build-up is simply airborne particles of dust collecting on the finish. If not properly removed, this build-up may dull or even scratch the finish. Simply wipe the finish with a cloth dampened with a mild detergent or polish.

Spills: Your finish is resistant to most household spills. If a spill should occur, it should be wiped up immediately to avoid any potential damage.

Excessive Exposure: Heat, high humidity, direct sunlight or liquids can damage both the finish and the wood. Take care to avoid these conditions.

our warranty

Charmworks LLC warrants its furniture products by providing a 10 year limited warranty to the original purchaser. Should any of our furniture products fail due to defects in material or workmanship under normal use within this period, Charmworks LLC will, at its own discretion, repair or replace the defective part. This warranty is not transferable.

This warranty does not cover products which are misused, abused, mishandled, improperly installed, improperly stored, changed, modified, or subject to extreme temperatures or extreme moisture levels. This warranty is not valid for products used for any purpose other than the purpose for which they were originally intended.

This warranty does not cover the cost of installation, removal, subsequent damage, or transportation of the defective product regardless of whether work was performed by a contractor, service company, or homeowner.

Variations in color and grain patterns are a natural characteristic of wood. Color changes may occur as a result of aging, exposure to light heat, and other natural and chemical elements. Color variations and changes are not covered by this warranty.

To submit a claim under this warranty, contact the retail furniture store where you purchased the product.

chest key

wood type key

11 = Cedar
22 = Oak
33 = Cherry
44 = Maple

55 = Quarter Sawn
White Oak
66 = Tiger Maple
88 = Hickory

symbol key

S = Standard
O = Optional
N/A = Not Available

	Description	Wood Species	Item #	Overall Dimensions W X D X H	Cu. Feet	Casters	Lock	Spring Lid Sup- port	Dovetail Joints	Cedar Lining
BASIC	Small	Cedar	20-11	30 x 15.5 x 16.5	2.8	N/A	O	N/A	O	N/A
	Medium	Cedar	30-11	36 x 17.5 x 18.5	5.1	N/A	O	N/A	O	N/A
	Large	Cedar	40-11	42 x 18.5 x 19.5	6.7	N/A	O	N/A	O	N/A
FRANKLIN	Small	Cedar	33-11	36 x 17.5 x 17.5	3.6	O	S	N/A	O	N/A
	Medium	Cedar	44-11	42 x 18.5 x 19	4.9	O	S	N/A	O	N/A
	Large	Cedar	55-11	46 x 20 x 20.5	6.9	O	S	N/A	O	N/A
CHARLESTON	Medium	Oak	44-22	42 x 18.5 x 19	4.9	O	S	S	O	O
	Large	Oak	55-22	46 x 20 x 20.5	6.9	O	S	S	O	O
	Medium	Cherry	44-33	42 x 18.5 x 19	4.9	O	S	S	O	O
	Large	Cherry	55-33	46 x 20 x 20.5	6.9	O	S	S	O	O
SUMMERFIELD	Petite	Cedar	27-11	29 x 16.5 x 17	2.2	N/A	S	N/A	O	N/A
	Small	Cedar	37-11	36 x 17.5 x 18	3.3	O	S	N/A	O	N/A
	Medium	Cedar	72-11	42 x 18.5 x 19.5	4.5	O	S	N/A	O	N/A
	Large	Cedar	77-11	46 x 20 x 21.5	6.4	O	S	N/A	O	N/A
	Jumbo	Cedar	97-11	46 x 24.5 x 25.5	10.2	O	S	N/A	O	N/A
HARMONY	Small	Oak	37-22	36 x 17.5 x 18	3.3	O	S	S	O	O
	Medium	Oak	72-22	42 x 18.5 x 19	4.5	O	S	S	O	O
	Large	Oak	77-22	46 x 20 x 21.5	6.4	O	S	S	O	O
	Jumbo	Oak	97-22	46 x 24.5 x 25.5	10.2	O	S	S	O	O
	Small	Cherry	37-33	36 x 17.5 x 18	3.3	O	S	S	O	O
	Medium	Cherry	72-33	42 x 18.5 x 19	4.5	O	S	S	O	O
	Large	Cherry	77-33	46 x 20 x 21.5	6.4	O	S	S	O	O
	Jumbo	Cherry	97-33	46 x 24.5 x 25.5	10.2	O	S	S	O	O
	Small	Maple	37-44	36 x 17.5 x 18	3.3	O	S	S	O	O
	Medium	Maple	72-44	42 x 18.5 x 19	4.5	O	S	S	O	O
	Large	Maple	77-44	46 x 20 x 21.5	6.4	O	S	S	O	O
	Jumbo	Maple	97-44	46 x 24.5 x 25.5	10.2	O	S	S	O	O
STEAMER TRUNK		Oak	100-22	36 x 20 x 18	4.9	N/A	S	N/A	N/A	N/A
		Maple	100-44	36 x 20 x 18	4.9	N/A	S	N/A	N/A	N/A
		Hickory	100-88	36 x 20 x 18	4.9	N/A	S	N/A	N/A	N/A
	Tall	Oak	124-22	36 x 20 x 24	7.2	N/A	S	N/A	N/A	N/A
	Tall	Maple	124-44	36 x 20 x 24	7.2	N/A	S	N/A	N/A	N/A
	Tall	Hickory	124-88	36 x 20 x 24	7.2	N/A	S	N/A	N/A	N/A
PLYMOUTH TRUNK		Oak	200-22	36 x 20 x 18	4.9	N/A	S	N/A	N/A	N/A
		Maple	200-44	36 x 20 x 18	4.9	N/A	S	N/A	N/A	N/A
		Hickory	200-88	36 x 20 x 18	4.9	N/A	S	N/A	N/A	N/A
	Tall	Oak	224-22	36 x 20 x 24	7.2	N/A	S	N/A	N/A	N/A
	Tall	Maple	224-44	36 x 20 x 24	7.2	N/A	S	N/A	N/A	N/A
	Tall	Hickory	224-88	36 x 20 x 24	7.2	N/A	S	N/A	N/A	N/A
WHEATLAND	Large	Oak	51-22	46w x 20d x 20.5h	6.9	O	S	S	O	O
	Large	Cherry	51-33	46w x 20d x 20.5h	6.9	O	S	S	O	O
	Large	Maple	51-44	46w x 20d x 20.5h	6.9	O	S	S	O	O
	Medium	Oak	41-22	42w x 18.5d x 19h	4.9	O	S	S	O	O
	Medium	Cherry	41-33	42w x 18.5d x 19h	4.9	O	S	S	O	O
	Medium	Maple	41-44	42w x 18.5d x 19h	4.9	O	S	S	O	O

	Description	Wood Species	Item #	Overall Dimensions W X D X H	Cu. Feet	Casters	Lock	Spring Lid Support	Dovetail Joints	Cedar Lining
MAN- CHESTER		Cedar	56-11	46 x 20 x 24.5	6.8	O	S	N/A	O	N/A
		Oak	56-22	46 x 20 x 24.5	6.8	N/A	S	S	O	O
		Cherry	56-33	46 x 20 x 24.5	6.8	N/A	S	S	O	O
SPRING FIELD	Medium	Cedar	4407-11	42 x 18.5 x 22	4.9	O	S	N/A	O	N/A
	Large	Cedar	5507-11	46 x 20 x 24.5	6.8	O	S	N/A	O	N/A
CAMBRIDGE	Medium	Oak	4407-22	42 x 18.5 x 22	4.9	N/A	S	S	O	O
	Large	Oak	5507-22	46 x 20 x 24.5	6.8	N/A	S	S	O	O
	Medium	Cherry	4407-33	42 x 18.5 x 22	4.9	N/A	S	S	O	O
	Large	Cherry	5507-33	46 x 20 x 24.5	6.8	N/A	S	S	O	O
CARRIAGE HOUSE	Tulip Foot	Oak	701-22	36.5 x 17.75 x 23.5	3.4	N/A	S	S	S	N/A
	Shaker Base	Oak	702-22	36.5 x 17.75 x 23.5	3.4	N/A	S	S	S	N/A
	Tulip Foot	Cherry	701-33	36.5 x 17.75 x 23.5	3.4	N/A	S	S	S	N/A
	Shaker Base	Cherry	702-33	36.5 x 17.75 x 23.5	3.4	N/A	S	S	S	N/A
	Tulip Foot	Maple	701-44	36.5 x 17.75 x 23.5	3.4	N/A	S	S	S	N/A
	Shaker Base	Maple	702-44	36.5 x 17.75 x 23.5	3.4	N/A	S	S	S	N/A
	Shaker Base	Tiger Maple	702-66	36.5 x 17.75 x 23.5	3.4	N/A	S	S	S	N/A
	Shaker Base	Qtr. Sawn Oak	702-55	36.5 x 17.75 x 23.5	3.4	N/A	S	S	S	N/A
SAVANNAH	Tulip Foot	Oak	601-22	36.5 x 17.75 x 23.5	4.9	N/A	S	S	S	N/A
	Shaker Base	Oak	602-22	36.5 x 17.75 x 23.5	4.9	N/A	S	S	S	N/A
	Tulip Foot	Cherry	601-33	36.5 x 17.75 x 23.5	4.9	N/A	S	S	S	N/A
	Shaker Base	Cherry	602-33	36.5 x 17.75 x 23.5	4.9	N/A	S	S	S	N/A
	Tulip Foot	Maple	601-44	36.5 x 17.75 x 23.5	4.9	N/A	S	S	S	N/A
	Shaker Base	Maple	602-44	36.5 x 17.75 x 23.5	4.9	N/A	S	S	S	N/A
	Shaker Base	Tiger Maple	602-66	36.5 x 17.75 x 23.5	4.9	N/A	S	S	S	N/A
	Shaker Base	Qtr. Sawn Oak	602-55	36.5 x 17.75 x 23.5	4.9	N/A	S	S	S	N/A
YORKTOWN	Medium	Oak	4400-22	42.5 x 19 x 19	4.9	N/A	S	S	O	O
	Large	Oak	5500-22	46.5 x 20.5 x 21	6.8	N/A	S	S	O	O
	Medium	Cherry	4400-33	42.5 x 19 x 19	4.9	N/A	S	S	O	O
	Large	Cherry	5500-33	46.5 x 20.5 x 21	6.8	N/A	S	S	O	O
MIS- SION		Oak	3718-22	42.5 x 19.25 x 19	4.8	N/A	O	S	N/A	N/A
		Qtr Sawn Oak	3718-55	42.5 x 19.25 x 19	4.8	N/A	O	S	N/A	N/A
MAYFLOWER	Medium	Oak	423-22	42.5 x 18.5 x 21.5	5.8	N/A	S	S	N/A	O
	Large	Oak	523-22	46.5 x 20.5 x 22.5	7.3	N/A	S	S	N/A	O
	Medium	Cherry	423-33	42.5 x 18.5 x 21.5	5.8	N/A	S	S	N/A	O
	Large	Cherry	523-33	46.5 x 20.5 x 22.5	7.3	N/A	S	S	N/A	O
SHAKER 3 PANEL	3 Panel	Oak	4219-22	42.5 x 19.25 x 19	5	N/A	O	S	N/A	N/A
	3 Panel	Cherry	4219-33	42.5 x 19.25 x 19	5	N/A	O	S	N/A	N/A
	3 Panel	Maple	4219-44	42.5 x 19.25 x 19	5	N/A	O	S	N/A	N/A
SHAKER 2 PANEL	2 Panel	Oak	3316-22	33 x 16.5 x 18	2.8	N/A	O	S	N/A	N/A
	2 Panel	Cherry	3316-33	33 x 16.5 x 18	2.8	N/A	O	S	N/A	N/A
	2 Panel	Maple	3316-44	33 x 16.5 x 18	2.8	N/A	O	S	N/A	N/A
TOY CHEST		Maple	411-44	36.5 x 17.75 x 17.75	4.2	N/A	N/A	S	O	N/A
		Oak	411-22	36.5 x 17.75 x 17.75	4.2	N/A	N/A	S	O	N/A
	Engraved	Oak	421-22	42.5 x 18.75 x 18.75	5.2	N/A	N/A	S	O	N/A
	Plain	Oak	424-22	42.5 x 18.75 x 18.75	5.2	N/A	N/A	S	O	N/A
HAIRPIN	Large	Oak	58-22	45.5w x 20.5d x 19.5h	6.3	N/A	S	S	O	N/A
	Large	Cherry	58-33	45.5w x 20.5d x 19.5h	6.3	N/A	S	S	O	N/A
	Large	Maple	58-44	45.5w x 20.5d x 19.5h	6.3	N/A	S	S	O	N/A
	Medium	Oak	48-22	41.5w x 18.75d x 18.5h	4.9	N/A	S	S	O	N/A
	Medium	Cherry	48-33	41.5w x 18.75d x 18.5h	4.9	N/A	S	S	O	N/A
	Medium	Maple	48-44	41.5w x 18.75d x 18.5h	4.9	N/A	S	S	O	N/A



2024

